

# Overview

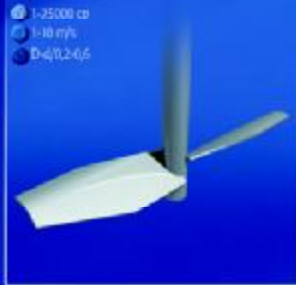
**Propeller**

- 1-6000 cp
- 3-15 m/s
- D-4/0,1-6,3



**Hydrofoil**

- 1-25000 cp
- 1-10 m/s
- D-4/0,2-6,6



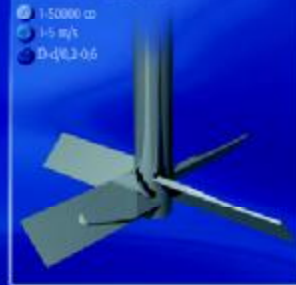
**Trapezium turbine**

- 1-10000 cp
- 3-10 m/s
- D-4/0,2-6,8



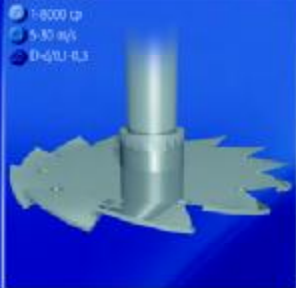
**Axialflow turbine**

- 1-50000 cp
- 1-5 m/s
- D-4/0,3-6,6



**Sawblade**

- 1-6000 cp
- 3-10 m/s
- D-4/0,1-6,3



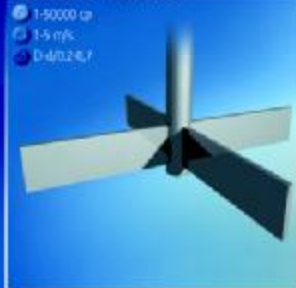
**Flatblade/Rushton**

- 1-10000 cp
- 1-5 m/s
- D-4/0,1-6,3



**Radialflow turbine**

- 1-50000 cp
- 1-5 m/s
- D-4/0,2-6,7



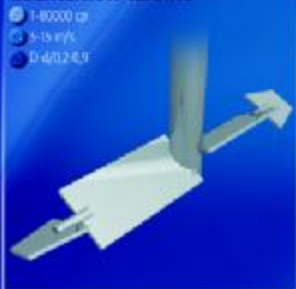
**Cup-mixer**

- 1-5000 cp
- 1-15 m/s
- D-4/0,1-6,3



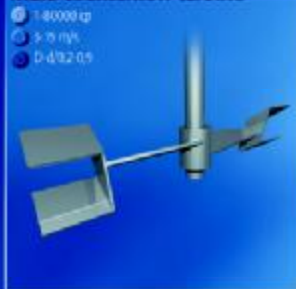
**Counterflow turbine**

- 1-80000 cp
- 3-15 m/s
- D-4/0,2-6,9



**Multi counterflow turbine**

- 1-40000 cp
- 3-10 m/s
- D-4/0,2-6,9



**U/Z turbines**

- 1-22000 cp
- 1-5 m/s
- D-4/0,2-6,5



**Combination elements**

- 1-82000 cp
- 1-15 m/s
- D-4/0,1-6,3



**Anchor**

- 1-100000 cp
- 1-2 m/s
- D-4/0,36-1



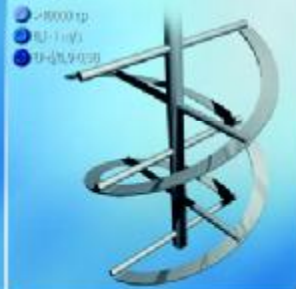
**Gate**

- 1-30000 cp
- 1-2 m/s
- D-4/0,3-1



**Ribbon**

- 1-80000 cp
- 0,5-1 m/s
- D-4/0,3-0,5/0,5



**Rotor/stator**

- 1-80000 cp
- 0,5-10 m/s
- D-4/0,1-6,3



**Jet mixer**



**Static mixer**



**Dynamic in-line mixer**



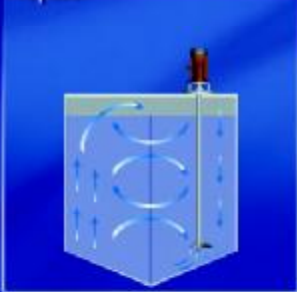
**Mobile lifting device**



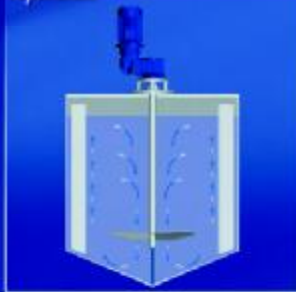
# Flow patterns

Always the right solution

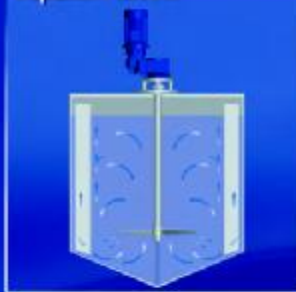
Propeller



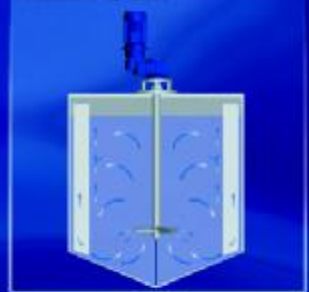
Hydrofoil



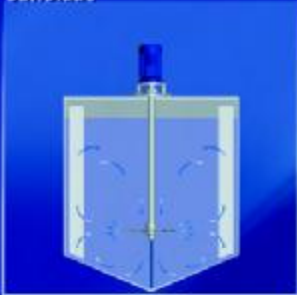
Trapezium turbine



Axialflow turbine



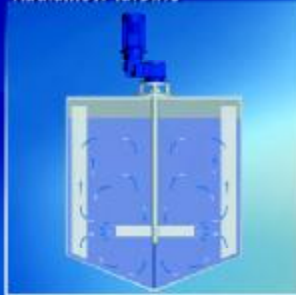
Sawblade



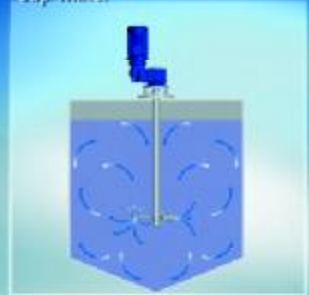
Flatblade/Rushton



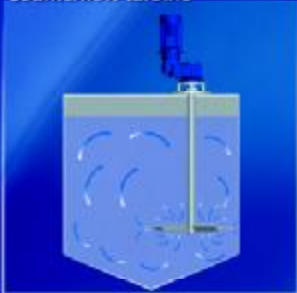
Radialflow turbine



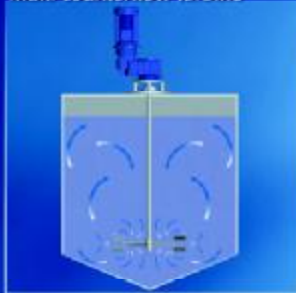
Cup-mixer



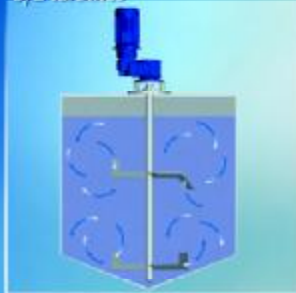
Counterflow turbine



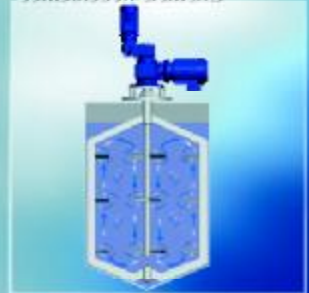
Multi counterflow turbine



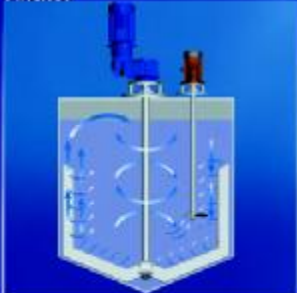
U/Z turbines



Combination elements



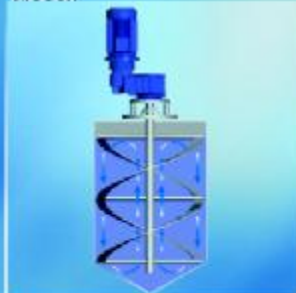
Anchor



Gate



Ribbon



Rotor/stator



 **jongia**  
mixing technology

## Info

office J. Walbraat 8 - Leeuwarden  
address P.O. Box 284  
8901 BB Leeuwarden  
The Netherlands  
telephone +31 (0)58-215 97 15  
fax +31 (0)58-212 97 87  
www info@jongia.com  
www www.jongia.com

member of the MPB Group

For Quantities contact us at 058-215 97 15